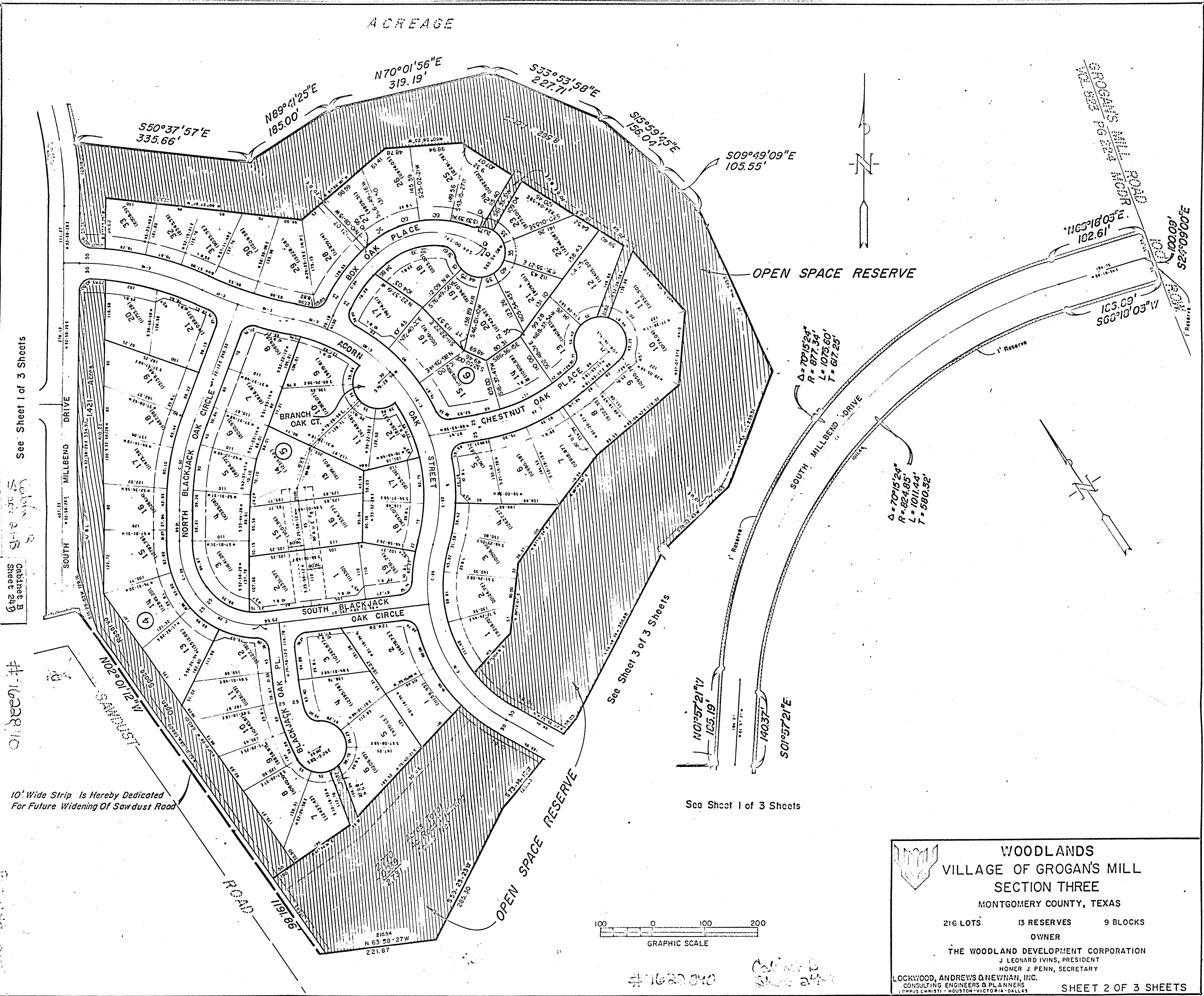


ACREAGE



See Sheet 1 of 3 Sheets

See Sheet 3 of 3 Sheets

See Sheet 1 of 3 Sheets

#1622040

10' Wide Strip Is Hereby Dedicated For Future Widening Of Sawdust Road



#1622040

Cabinet B
Sheet 2 of 3

WOODLANDS
VILLAGE OF GROGAN'S MILL
SECTION THREE
 MONTGOMERY COUNTY, TEXAS

216 LOTS 13 RESERVES 9 BLOCKS

OWNER
 THE WOODLAND DEVELOPMENT CORPORATION
 J. LEONARD IVINS, PRESIDENT
 HOMER J. PENN, SECRETARY

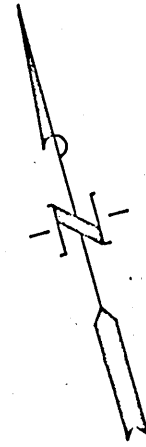
LOCKWOOD, ANDREWS & HEWMAN, I.I.C.
 CONSULTING ENGINEERS & PLANNERS
 CORPUS CHRISTI - HOUSTON - VICTORIA - DALLAS

SHEET 2 OF 3 SHEETS

50240.002

08202144

B-0040.003

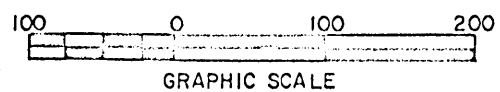


10' Wide Strip is Hereby Dedicated For Future Widening Of Sawdust Road

OPEN SPACE RESERVE

(UNRESTRICTED) "C" RESERVE
Total Widening
10.061 Acres
Road Widening
-0.124 Acres
Net
9.937 Acres

ACREAGE



7622840

Cabinet B
Sheet 25A

WOODLANDS
VILLAGE OF GROGAN'S MILL
SECTION THREE
 MONTGOMERY COUNTY, TEXAS

216 LOTS 13 RESERVES 9 BLOCKS

OWNER
 THE WOODLANDS DEVELOPMENT CORPORATION
 J LEONARD IVINS, PRESIDENT
 ROBERT N. HINTON, SECRETARY

LOCKWOOD, ANDREWS & NEWMAN, INC.
 CONSULTING ENGINEERS & PLANNERS
 CORPUS CHRISTI - HOUSTON - VICTORIA - DALLAS

SHEET 3 OF 3 SHEETS

$\Delta = 24^{\circ}56'40''$
 $R = 2153.47'$
 $T = 471.90'$
 $L = 928.84'$
 $CH = 921.52'$
 BG. N11-12-27E

SAWMILL ROAD 100' R-O-W

Cabinet B
Sheet 25A

Vol. 334 PAGE 369
M. C. D. R.

