

344150 VIII 12 PAGE 26
 # 344150
 # 17 Page 26

Street Name Changes
 Note the following street name changes as per ordered by Commissioners Court June 17, 1974:

Original Name	New Name
Milchase Court	Blueberry Court
Milgram Place	Sweetspire Place
Timberbain Place	Summerswest Place
West Timberwayn Crt.	West Timber Court
Timber Bridge Place	Laurel Cherry Way
Timberleaf off West Timberwayn Circle	Whisper Willow Place
	Silverleaf Court

- NOTES
1. THE FRONT REFERENCE DESIGNATED TO THE PUBLIC IN USE AS A BUFFER SEPARATION BETWEEN THE SIDE OR END OF STREETS IN SUBDIVISION PLATS WHERE NECESSARY TO INDICATE THE LOCATION OF THE PROPERTY LINE AND TO INDICATE THE LOCATION OF THE PROPERTY LINE SHALL BE SHOWN BY A DOTTED LINE.
 2. THE FRONT REFERENCE DESIGNATED TO THE PUBLIC IN USE AS A BUFFER SEPARATION BETWEEN THE SIDE OR END OF STREETS IN SUBDIVISION PLATS WHERE NECESSARY TO INDICATE THE LOCATION OF THE PROPERTY LINE AND TO INDICATE THE LOCATION OF THE PROPERTY LINE SHALL BE SHOWN BY A DOTTED LINE.
 3. THE FRONT REFERENCE DESIGNATED TO THE PUBLIC IN USE AS A BUFFER SEPARATION BETWEEN THE SIDE OR END OF STREETS IN SUBDIVISION PLATS WHERE NECESSARY TO INDICATE THE LOCATION OF THE PROPERTY LINE AND TO INDICATE THE LOCATION OF THE PROPERTY LINE SHALL BE SHOWN BY A DOTTED LINE.
 4. THE FRONT REFERENCE DESIGNATED TO THE PUBLIC IN USE AS A BUFFER SEPARATION BETWEEN THE SIDE OR END OF STREETS IN SUBDIVISION PLATS WHERE NECESSARY TO INDICATE THE LOCATION OF THE PROPERTY LINE AND TO INDICATE THE LOCATION OF THE PROPERTY LINE SHALL BE SHOWN BY A DOTTED LINE.
 5. THE FRONT REFERENCE DESIGNATED TO THE PUBLIC IN USE AS A BUFFER SEPARATION BETWEEN THE SIDE OR END OF STREETS IN SUBDIVISION PLATS WHERE NECESSARY TO INDICATE THE LOCATION OF THE PROPERTY LINE AND TO INDICATE THE LOCATION OF THE PROPERTY LINE SHALL BE SHOWN BY A DOTTED LINE.
 6. THE FRONT REFERENCE DESIGNATED TO THE PUBLIC IN USE AS A BUFFER SEPARATION BETWEEN THE SIDE OR END OF STREETS IN SUBDIVISION PLATS WHERE NECESSARY TO INDICATE THE LOCATION OF THE PROPERTY LINE AND TO INDICATE THE LOCATION OF THE PROPERTY LINE SHALL BE SHOWN BY A DOTTED LINE.
 7. THE FRONT REFERENCE DESIGNATED TO THE PUBLIC IN USE AS A BUFFER SEPARATION BETWEEN THE SIDE OR END OF STREETS IN SUBDIVISION PLATS WHERE NECESSARY TO INDICATE THE LOCATION OF THE PROPERTY LINE AND TO INDICATE THE LOCATION OF THE PROPERTY LINE SHALL BE SHOWN BY A DOTTED LINE.
 8. THE FRONT REFERENCE DESIGNATED TO THE PUBLIC IN USE AS A BUFFER SEPARATION BETWEEN THE SIDE OR END OF STREETS IN SUBDIVISION PLATS WHERE NECESSARY TO INDICATE THE LOCATION OF THE PROPERTY LINE AND TO INDICATE THE LOCATION OF THE PROPERTY LINE SHALL BE SHOWN BY A DOTTED LINE.
 9. THE FRONT REFERENCE DESIGNATED TO THE PUBLIC IN USE AS A BUFFER SEPARATION BETWEEN THE SIDE OR END OF STREETS IN SUBDIVISION PLATS WHERE NECESSARY TO INDICATE THE LOCATION OF THE PROPERTY LINE AND TO INDICATE THE LOCATION OF THE PROPERTY LINE SHALL BE SHOWN BY A DOTTED LINE.
 10. LOTS 2, 3 & 4 BLOCK 7 DEVIATED DIRECT ACCESS FROM BULLDOGE CIRCLE BLOCK 7 SHALL HAVE A MINIMUM ELEVATION OF 12.5 FEET.
 11. LOTS 2, 3 & 4 BLOCK 7 DEVIATED DIRECT ACCESS FROM BULLDOGE CIRCLE BLOCK 7 SHALL HAVE A MINIMUM ELEVATION OF 12.5 FEET.
 12. LOTS 2, 3 & 4 BLOCK 7 DEVIATED DIRECT ACCESS FROM BULLDOGE CIRCLE BLOCK 7 SHALL HAVE A MINIMUM ELEVATION OF 12.5 FEET.

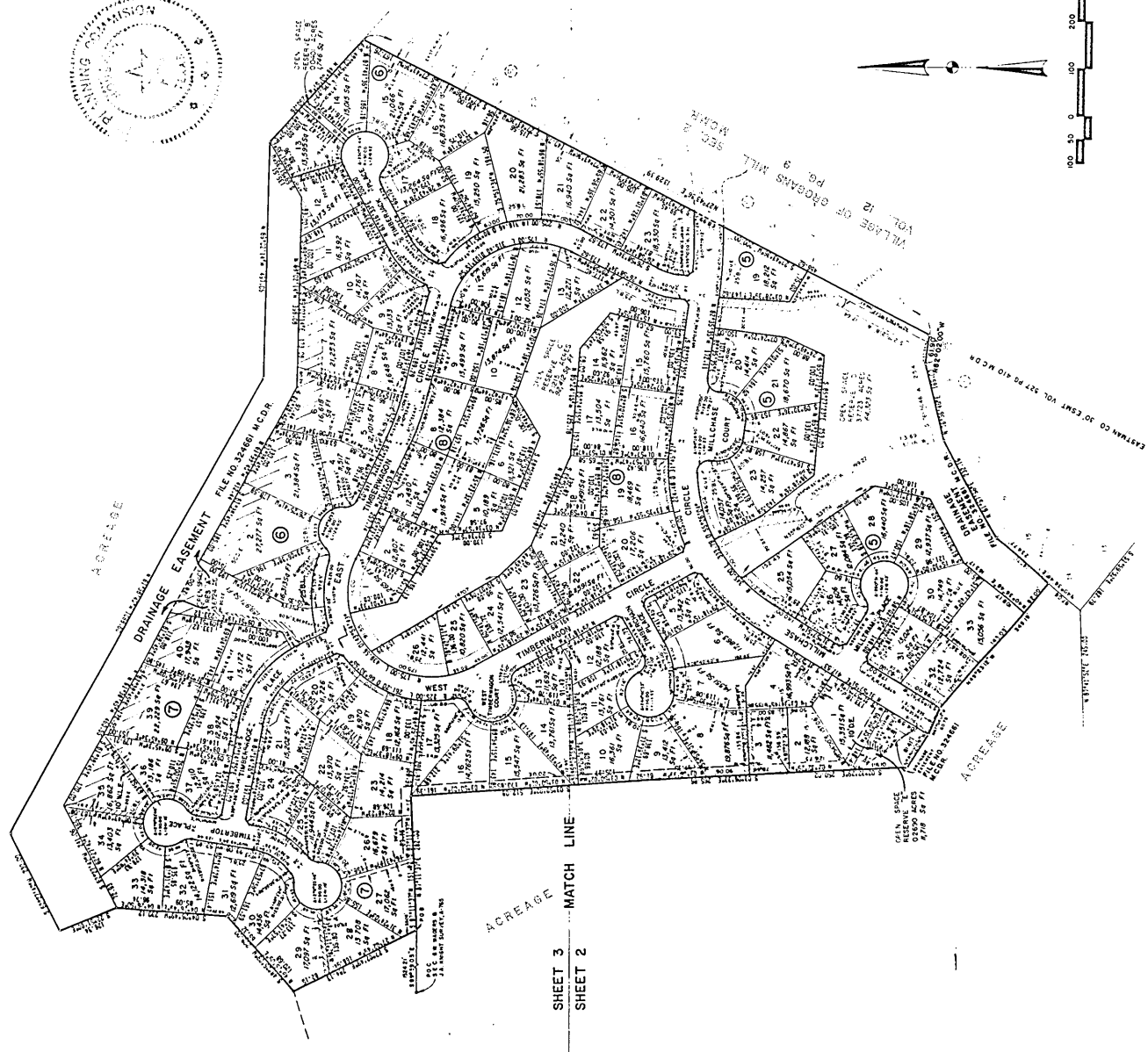
Roy Harris, County Clerk
 Montgomery County, Texas
 Deane McInnis, Deputy

THE WOODLANDS DEVELOPMENT CORPORATION
 A NEW COMMUNITY ASSISTED BY THE COMMUNITY DEVELOPMENT CORPORATION OF H.L.D.
VILLAGE OF GROGANS MILL
 SECTION SIX
 A SUBDIVISION OF 52.4000 ACRES OUT OF THE
 JOHN TAYLOR SURVEY, A-547
 MONTGOMERY COUNTY, TEXAS

105 LOTS
 SCALE: 1" = 200'
 5 RESERVES
 4 BLOCKS
 FEBRUARY, 1974

OWNER
 THE WOODLANDS DEVELOPMENT CORPORATION
 ROBINSON G. LAPP, VICE PRESIDENT
 ROBERT N. HINTON, JR., SECRETARY

TURNER, COLLIE & BRADEN, INC.
 CONSULTING ENGINEERS
 HOUSTON
 POST ARTHUR



AREA	ACRES
60' RIGHT OF WAY	2.0882
50' RIGHT OF WAY	5.1381
OPEN SPACE RESERVE	9.8753
SINGLE FAMILY LOTS	35.2984
TOTAL	52.4000

WOODLANDS DEVELOPMENT CORPORATION
 A NEW COMMUNITY ASSISTED BY THE COMMUNITY DEVELOPMENT CORPORATION OF H.L.D.
VILLAGE OF GROGANS MILL
 SECTION SIX
 A SUBDIVISION OF 52.4000 ACRES OUT OF THE
 JOHN TAYLOR SURVEY, A-547
 MONTGOMERY COUNTY, TEXAS

105 LOTS
 SCALE: 1" = 200'
 5 RESERVES
 4 BLOCKS
 FEBRUARY, 1974

OWNER
 THE WOODLANDS DEVELOPMENT CORPORATION
 ROBINSON G. LAPP, VICE PRESIDENT
 ROBERT N. HINTON, JR., SECRETARY

TURNER, COLLIE & BRADEN, INC.
 CONSULTING ENGINEERS
 HOUSTON
 POST ARTHUR

THE WOODLANDS DEVELOPMENT CORPORATION
 A NEW COMMUNITY ASSISTED BY THE COMMUNITY DEVELOPMENT CORPORATION OF H.L.D.
VILLAGE OF GROGANS MILL
 SECTION SIX
 A SUBDIVISION OF 52.4000 ACRES OUT OF THE
 JOHN TAYLOR SURVEY, A-547
 MONTGOMERY COUNTY, TEXAS

WOODLANDS DEVELOPMENT CORPORATION
 A NEW COMMUNITY ASSISTED BY THE COMMUNITY DEVELOPMENT CORPORATION OF H.L.D.
VILLAGE OF GROGANS MILL
 SECTION SIX
 A SUBDIVISION OF 52.4000 ACRES OUT OF THE
 JOHN TAYLOR SURVEY, A-547
 MONTGOMERY COUNTY, TEXAS

WOODLANDS DEVELOPMENT CORPORATION
 A NEW COMMUNITY ASSISTED BY THE COMMUNITY DEVELOPMENT CORPORATION OF H.L.D.
VILLAGE OF GROGANS MILL
 SECTION SIX
 A SUBDIVISION OF 52.4000 ACRES OUT OF THE
 JOHN TAYLOR SURVEY, A-547
 MONTGOMERY COUNTY, TEXAS

WOODLANDS DEVELOPMENT CORPORATION
 A NEW COMMUNITY ASSISTED BY THE COMMUNITY DEVELOPMENT CORPORATION OF H.L.D.
VILLAGE OF GROGANS MILL
 SECTION SIX
 A SUBDIVISION OF 52.4000 ACRES OUT OF THE
 JOHN TAYLOR SURVEY, A-547
 MONTGOMERY COUNTY, TEXAS

WOODLANDS DEVELOPMENT CORPORATION
 A NEW COMMUNITY ASSISTED BY THE COMMUNITY DEVELOPMENT CORPORATION OF H.L.D.
VILLAGE OF GROGANS MILL
 SECTION SIX
 A SUBDIVISION OF 52.4000 ACRES OUT OF THE
 JOHN TAYLOR SURVEY, A-547
 MONTGOMERY COUNTY, TEXAS

WOODLANDS DEVELOPMENT CORPORATION
 A NEW COMMUNITY ASSISTED BY THE COMMUNITY DEVELOPMENT CORPORATION OF H.L.D.
VILLAGE OF GROGANS MILL
 SECTION SIX
 A SUBDIVISION OF 52.4000 ACRES OUT OF THE
 JOHN TAYLOR SURVEY, A-547
 MONTGOMERY COUNTY, TEXAS

WOODLANDS DEVELOPMENT CORPORATION
 A NEW COMMUNITY ASSISTED BY THE COMMUNITY DEVELOPMENT CORPORATION OF H.L.D.
VILLAGE OF GROGANS MILL
 SECTION SIX
 A SUBDIVISION OF 52.4000 ACRES OUT OF THE
 JOHN TAYLOR SURVEY, A-547
 MONTGOMERY COUNTY, TEXAS

WOODLANDS DEVELOPMENT CORPORATION
 A NEW COMMUNITY ASSISTED BY THE COMMUNITY DEVELOPMENT CORPORATION OF H.L.D.
VILLAGE OF GROGANS MILL
 SECTION SIX
 A SUBDIVISION OF 52.4000 ACRES OUT OF THE
 JOHN TAYLOR SURVEY, A-547
 MONTGOMERY COUNTY, TEXAS

WOODLANDS DEVELOPMENT CORPORATION
 A NEW COMMUNITY ASSISTED BY THE COMMUNITY DEVELOPMENT CORPORATION OF H.L.D.
VILLAGE OF GROGANS MILL
 SECTION SIX
 A SUBDIVISION OF 52.4000 ACRES OUT OF THE
 JOHN TAYLOR SURVEY, A-547
 MONTGOMERY COUNTY, TEXAS

WOODLANDS DEVELOPMENT CORPORATION
 A NEW COMMUNITY ASSISTED BY THE COMMUNITY DEVELOPMENT CORPORATION OF H.L.D.
VILLAGE OF GROGANS MILL
 SECTION SIX
 A SUBDIVISION OF 52.4000 ACRES OUT OF THE
 JOHN TAYLOR SURVEY, A-547
 MONTGOMERY COUNTY, TEXAS

WOODLANDS DEVELOPMENT CORPORATION
 A NEW COMMUNITY ASSISTED BY THE COMMUNITY DEVELOPMENT CORPORATION OF H.L.D.
VILLAGE OF GROGANS MILL
 SECTION SIX
 A SUBDIVISION OF 52.4000 ACRES OUT OF THE
 JOHN TAYLOR SURVEY, A-547
 MONTGOMERY COUNTY, TEXAS

WOODLANDS DEVELOPMENT CORPORATION
 A NEW COMMUNITY ASSISTED BY THE COMMUNITY DEVELOPMENT CORPORATION OF H.L.D.
VILLAGE OF GROGANS MILL
 SECTION SIX
 A SUBDIVISION OF 52.4000 ACRES OUT OF THE
 JOHN TAYLOR SURVEY, A-547
 MONTGOMERY COUNTY, TEXAS

WOODLANDS DEVELOPMENT CORPORATION
 A NEW COMMUNITY ASSISTED BY THE COMMUNITY DEVELOPMENT CORPORATION OF H.L.D.
VILLAGE OF GROGANS MILL
 SECTION SIX
 A SUBDIVISION OF 52.4000 ACRES OUT OF THE
 JOHN TAYLOR SURVEY, A-547
 MONTGOMERY COUNTY, TEXAS

WOODLANDS DEVELOPMENT CORPORATION
 A NEW COMMUNITY ASSISTED BY THE COMMUNITY DEVELOPMENT CORPORATION OF H.L.D.
VILLAGE OF GROGANS MILL
 SECTION SIX
 A SUBDIVISION OF 52.4000 ACRES OUT OF THE
 JOHN TAYLOR SURVEY, A-547
 MONTGOMERY COUNTY, TEXAS

WOODLANDS DEVELOPMENT CORPORATION
 A NEW COMMUNITY ASSISTED BY THE COMMUNITY DEVELOPMENT CORPORATION OF H.L.D.
VILLAGE OF GROGANS MILL
 SECTION SIX
 A SUBDIVISION OF 52.4000 ACRES OUT OF THE
 JOHN TAYLOR SURVEY, A-547
 MONTGOMERY COUNTY, TEXAS

WOODLANDS DEVELOPMENT CORPORATION
 A NEW COMMUNITY ASSISTED BY THE COMMUNITY DEVELOPMENT CORPORATION OF H.L.D.
VILLAGE OF GROGANS MILL
 SECTION SIX
 A SUBDIVISION OF 52.4000 ACRES OUT OF THE
 JOHN TAYLOR SURVEY, A-547
 MONTGOMERY COUNTY, TEXAS

WOODLANDS DEVELOPMENT CORPORATION
 A NEW COMMUNITY ASSISTED BY THE COMMUNITY DEVELOPMENT CORPORATION OF H.L.D.
VILLAGE OF GROGANS MILL
 SECTION SIX
 A SUBDIVISION OF 52.4000 ACRES OUT OF THE
 JOHN TAYLOR SURVEY, A-547
 MONTGOMERY COUNTY, TEXAS

WOODLANDS DEVELOPMENT CORPORATION
 A NEW COMMUNITY ASSISTED BY THE COMMUNITY DEVELOPMENT CORPORATION OF H.L.D.
VILLAGE OF GROGANS MILL
 SECTION SIX
 A SUBDIVISION OF 52.4000 ACRES OUT OF THE
 JOHN TAYLOR SURVEY, A-547
 MONTGOMERY COUNTY, TEXAS

WOODLANDS DEVELOPMENT CORPORATION
 A NEW COMMUNITY ASSISTED BY THE COMMUNITY DEVELOPMENT CORPORATION OF H.L.D.
VILLAGE OF GROGANS MILL
 SECTION SIX
 A SUBDIVISION OF 52.4000 ACRES OUT OF THE
 JOHN TAYLOR SURVEY, A-547
 MONTGOMERY COUNTY, TEXAS

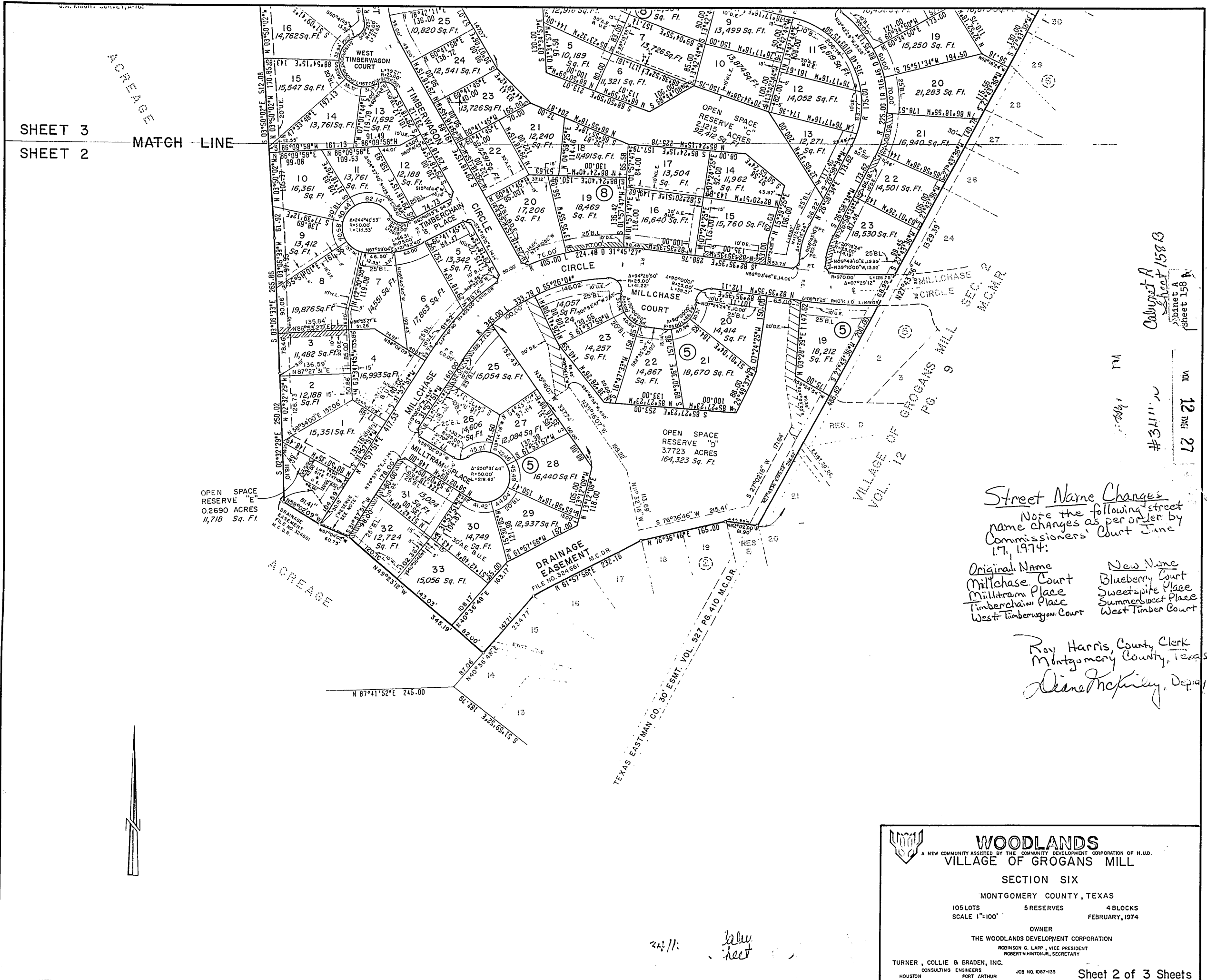
WOODLANDS DEVELOPMENT CORPORATION
 A NEW COMMUNITY ASSISTED BY THE COMMUNITY DEVELOPMENT CORPORATION OF H.L.D.
VILLAGE OF GROGANS MILL
 SECTION SIX
 A SUBDIVISION OF 52.4000 ACRES OUT OF THE
 JOHN TAYLOR SURVEY, A-547
 MONTGOMERY COUNTY, TEXAS

WOODLANDS DEVELOPMENT CORPORATION
 A NEW COMMUNITY ASSISTED BY THE COMMUNITY DEVELOPMENT CORPORATION OF H.L.D.
VILLAGE OF GROGANS MILL
 SECTION SIX
 A SUBDIVISION OF 52.4000 ACRES OUT OF THE
 JOHN TAYLOR SURVEY, A-547
 MONTGOMERY COUNTY, TEXAS

Robert A
 Sheet 158-A

Cabinet A
 Sheet 158-A

SHEET ONE AND INDEX



SHEET 3

SHEET 2

MATCH LINE

Calvin A. Smith
851 acres
A-1173-#

VOL 12 PAGE 27

Street Name Changes
Note the following street name changes as per order by Commissioners' Court June 17, 1974:

Original Name	New Name
Millchase Court	Blueberry Court
Millchase Place	Sweetspire Place
Timberchase Place	Summersweet Place
West Timberwagon Court	West Timber Court

Roy Harris, County Clerk
Montgomery County, Texas
Aiane McPhilly, Deputy

WOODLANDS
A NEW COMMUNITY ASSISTED BY THE COMMUNITY DEVELOPMENT CORPORATION OF H.U.D.
VILLAGE OF GROGANS MILL

SECTION SIX
MONTGOMERY COUNTY, TEXAS

105 LOTS 5 RESERVES 4 BLOCKS
SCALE 1"=100' FEBRUARY, 1974

OWNER
THE WOODLANDS DEVELOPMENT CORPORATION
ROBERTSON G. LAPP, VICE PRESIDENT
ROBERT HINTON, JR., SECRETARY

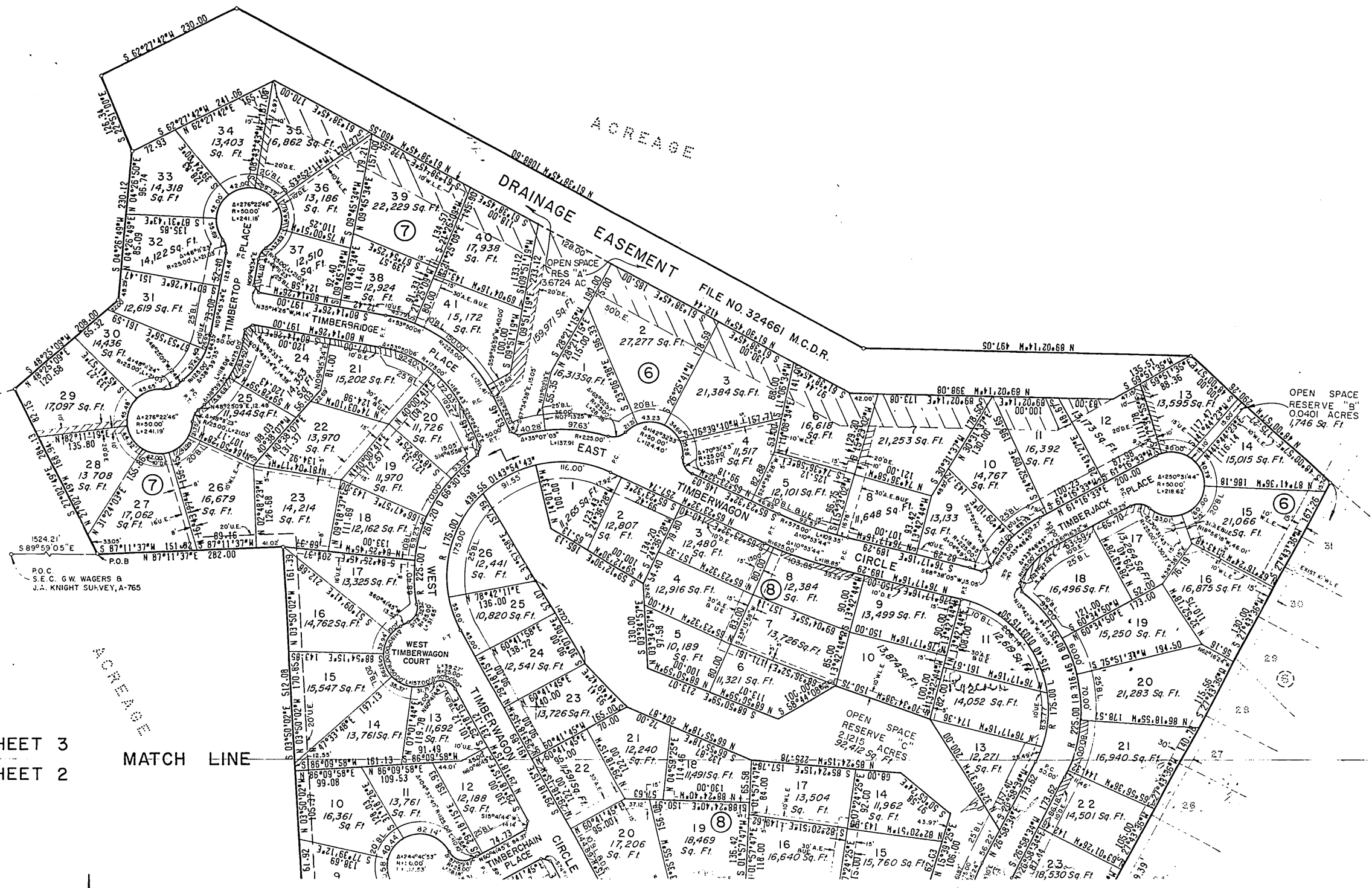
TURNER, COLLIE & BRADEN, INC.
CONSULTING ENGINEERS
HOUSTON PORT ARTHUR JOB NO. 1097-135

Sheet 2 of 3 Sheets

44:11: blue sheet

A-158a.000

VOL 12 PAGE 28
Val 12 Page 28



SHEET 3
SHEET 2
MATCH LINE

Street Name Changes
Note the following
street name changes as per
order by Commissioners' Court
June 17, 1974:

Original Name	New Name
Timbechain Place	Summersweet Place
Timber Bridge Place	Laurel Cherry Way
Timbertop Place	Whisper Willow Place
(Eyebrow off West Timberwagon Circle)	Silverleaf Court

Roy Harris, County Clerk
Montgomery County, Texas
Diane McKinley, Deputy

WOODLANDS
A NEW COMMUNITY ASSISTED BY THE COMMUNITY DEVELOPMENT CORPORATION OF H.U.D.
VILLAGE OF GROGANS MILL

SECTION SIX
MONTGOMERY COUNTY, TEXAS

105 LOTS 5 RESERVES 4 BLOCKS
SCALE 1"=100' FEBRUARY, 1974

OWNER
THE WOODLANDS DEVELOPMENT CORPORATION
ROBINSON G. LAPP, VICE PRESIDENT
ROBERT N. HYNTON JR., SECRETARY

TURNER, COLLIE & BRADEN, INC.
CONSULTING ENGINEERS
HOUSTON PORT ARTHUR JOB NO. 1047-135